

Animal Test 2

Multiple Choice

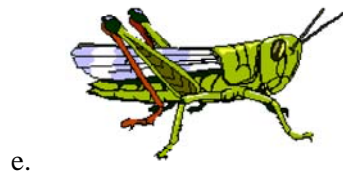
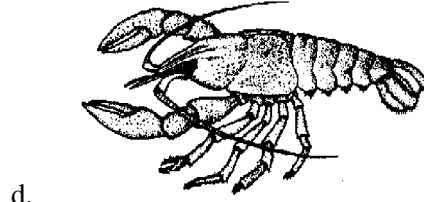
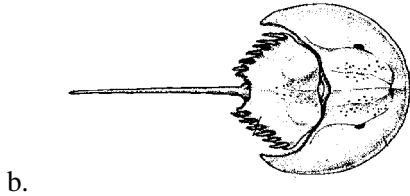
Identify the letter of the choice that best completes the statement or answers the question.

- _____ 1. Why must arthropods molt?
a. to breathe b. to reproduce c. to grow d. to eat
- _____ 2. Which of the following invertebrates is NOT a crustacean?
a. horseshoe crab b. fiddler crab c. barnacle d. crayfish
- _____ 3. Arthropods are classified based on the number and structure of their
a. eyes and wings. b. body segments and appendages. c. muscles and bones. d. gills and hearts.
- _____ 4. Insects are classified as
a. crustaceans. b. arachnids. c. uniramians. d. chelicerates.
- _____ 5. The easiest way to tell whether an arthropod is an insect or a spider is to
a. observe its color. b. count its legs. c. count its swimmerets. d. measure the length of its body.
- _____ 6. How many pairs of legs are there on most body segments of a centipede?
a. one b. two c. five d. six
- _____ 7. Which of the following is NOT a reason for the evolutionary success of insects?
a. The ability to fly has allowed insects to colonize new habitats. b. Insects as a group are not very diverse because there are relatively few species. c. Insects use a multitude of sense organs to respond to stimuli. d. Many insects have a life cycle in which the young are very different from adults.
- _____ 8. The compound eyes of insects
a. are made of many lenses. b. are located on the thorax. c. produce an image that is more detailed than what humans see. d. are not very good at detecting movement.
- _____ 9. In most species of echinoderms, respiration occurs mainly in the
a. tube feet. b. madreporite. c. ring canal. d. radial canals.
- _____ 10. The skeleton of an echinoderm is an
a. exoskeleton made of calcium carbonate. b. exoskeleton made of chitin. c. endoskeleton made of calcium carbonate. d. endoskeleton made of chitin.
- _____ 11. The echinoderms that look like warty, moving pickles are
a. sea urchins. b. sea cucumbers. c. sea stars. d. feather stars.
- _____ 12. In chordates, the long supporting rod that runs through the body is called the
a. nerve cord. b. notochord. c. pharyngeal pouch. d. tail.
- _____ 13. A vertebrate is any chordate that has a
a. backbone. b. notochord. c. hollow nerve cord. d. tail that extends beyond the anus.
- _____ 14. The two groups of nonvertebrate chordates are
a. tunicates and lancelets. b. skates and rays. c. frogs and toads. d. lungfishes and coelacanth.
- _____ 15. In most fishes, the structures that are most important for obtaining oxygen from water are the
a. scales. b. gills. c. lungs. d. vertebrae.
- _____ 16. The first vertebrates to evolve were
a. amphibians. b. lancelets. c. tunicates. d. fishes.

- ___ 17. Blood flows through the body of a fish in a
a. single-loop, open circulatory system. b. single-loop, closed circulatory system. c. double-loop, open circulatory system. d. double-loop, closed circulatory system.
- ___ 18. Modern jawless fishes include
a. skates. b. sharks. c. lampreys. d. lungfishes.
- ___ 19. Most amphibians exist as
a. aquatic larvae that breathe with gills and as terrestrial adults that breathe using lungs and skin. b. aquatic larvae that breathe using lungs and skin and as terrestrial adults that breathe with gills. c. terrestrial larvae that breathe with gills and as aquatic adults that breathe using lungs and skin. d. terrestrial larvae that breathe with gills and lungs and as aquatic adults that breathe using skin.
- ___ 20. The only places on Earth where most reptiles cannot live are very
a. hot areas. b. cold areas. c. dry areas. d. wet areas.
- ___ 21. One way an ectotherm can warm its body is to
a. move into the shade. b. bask in the sun. c. speed up its metabolism. d. crawl into an underground burrow.
- ___ 22. Reptiles exchange gases through their
a. gills. b. skin. c. lungs. d. limbs.
- ___ 23. The difference between reptilian eggs and amphibian eggs is that reptilian eggs
a. must develop in water. b. always hatch inside the mother's body. c. are surrounded by a protective shell and membranes. d. do not contain an embryo.
- ___ 24. Which of the following is NOT a characteristic of all birds?
a. They have an outer covering of feathers. b. They maintain a constant internal body temperature. c. They have two legs. d. They can fly.
- ___ 25. An endotherm is an animal that
a. has a low rate of metabolism. b. can generate its own body heat. c. stores large amounts of food in its stomach. d. can see color very well.
- ___ 26. The easiest way to distinguish a bird's egg from a reptile's egg is to
a. determine whether the egg contains an amnion. b. count the number of membranes in the egg. c. test the hardness of the outer shell. d. find out if the egg is waterproof.
- ___ 27. If a bird has a hooked bill and sharp talons, it might be a(an)
a. heron. b. ostrich. c. bird of prey. d. perching bird.
- ___ 28. Mammals are characterized by each of the following EXCEPT
a. mammary glands. b. hair. c. endothermy. d. three-chambered hearts.
- ___ 29. The egg-laying mammals are called
a. marsupials. b. monotremes. c. placental mammals. d. insectivores.
- ___ 30. An example of an animal with a marsupium is a(n)
a. elephant. b. sea lion. c. mouse. d. wombat.
- ___ 31. The function of a placenta is to
a. exchange materials between an embryo and its mother. b. store and process newly swallowed plant food. c. store urine until it is eliminated from the body. d. increase the volume of the chest cavity during breathing.

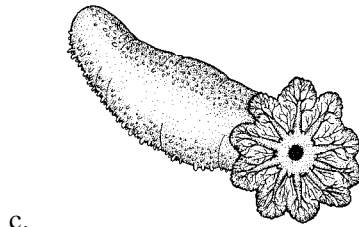
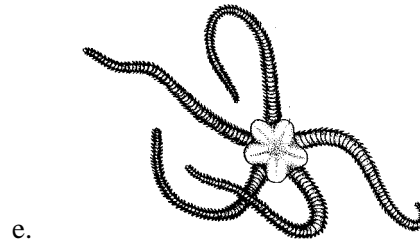
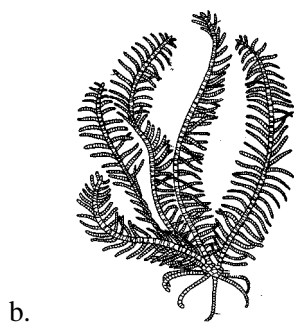
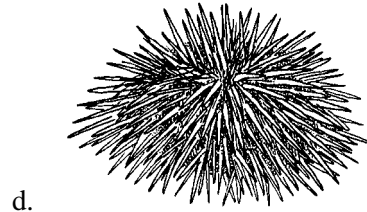
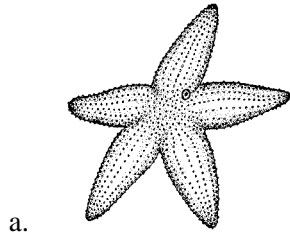
Matching

Match The name of the class of arthropods with the letter of the appropriate diagram below.



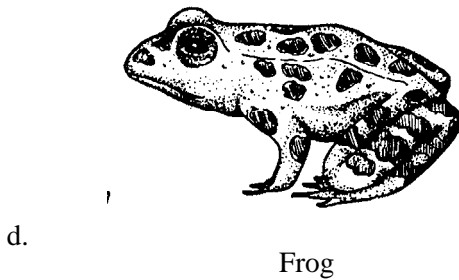
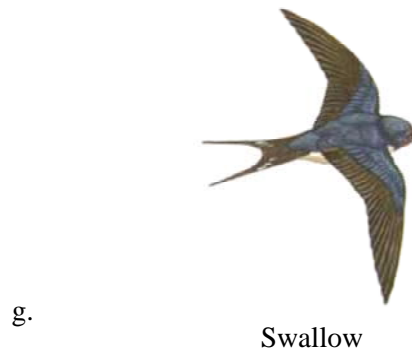
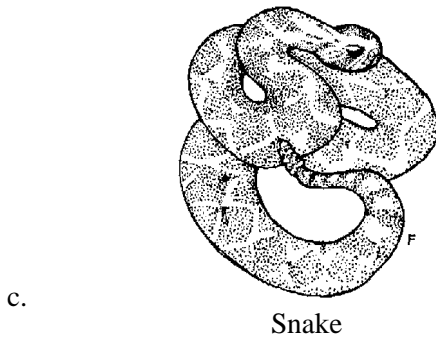
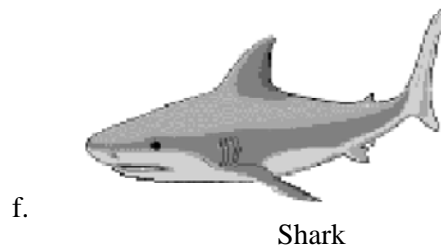
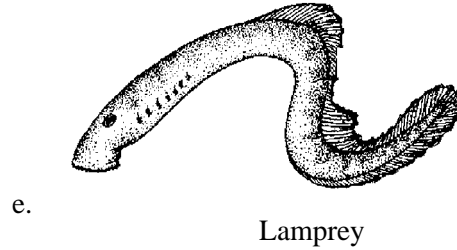
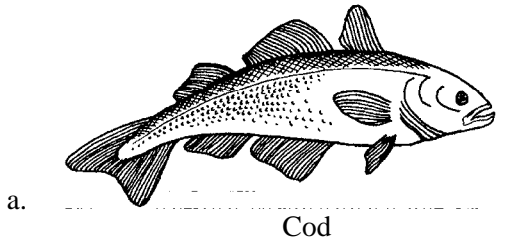
- ___ 32. Arachnida
- ___ 33. Diplopoda
- ___ 34. Insecta
- ___ 35. Merostomata
- ___ 36. Crustacea

Match the name of the class of echinoderm with the letter of the appropriate illustration below.



- ___ 37. Holothuroidea
- ___ 38. Asteroidea
- ___ 39. Echinoidea
- ___ 40. Ophiuroidea
- ___ 41. Crinoidea

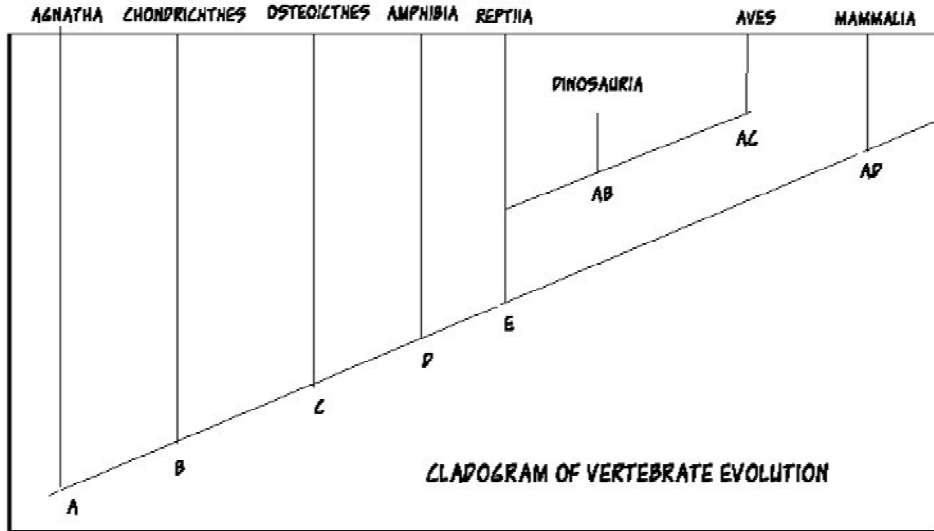
Match the letter of the diagram below with the appropriate phrase.



- ___ 42. Member of class Agnatha
- ___ 43. Member of Chondrichthes
- ___ 44. Member of Osteoichthes
- ___ 45. Member of class Amphibia
- ___ 46. Member of class Reptilia
- ___ 47. Member of class Aves
- ___ 48. Member of class Mammalia
- ___ 49. Undergoes Metamorphosis
- ___ 50. Possesses a swim bladder
- ___ 51. Produces milk

- ___ 52. Possesses a developed sternal keel
- ___ 53. Often uses skin as a respiratory organ
- ___ 54. Lacks bone and jaws
- ___ 55. Has Jaws but lacks bony skeleton

Match the letter from the cladogram of chordate evolution below with the correct evolutionary adaptation.



- 56. First amniotic egg _____
- 57. Paired fins _____
- 58. Internal fertilization _____
- 59. First bony skeleton _____
- 60. Extant class possessing feathers _____
- 61. Marsupium _____
- 62. Keratinized skin (not including toads) _____
- 63. Functional lungs (not including lungfish) _____
- 64. Placenta _____
- 65. Swim Bladder _____

Animal Test 2 Answer Section

MULTIPLE CHOICE

1. C
2. A
3. B
4. C
5. B
6. A
7. B
8. A
9. A
10. C
11. B
12. B
13. A
14. A
15. B
16. D
17. B
18. C
19. A
20. B
21. B
22. C
23. C
24. D
25. B
26. C
27. C
28. D
29. B
30. D
31. A

MATCHING

32. A
33. C
34. E
35. B
36. D

- 37. C
- 38. A
- 39. D
- 40. E
- 41. B

- 42. E
- 43. F
- 44. A
- 45. D
- 46. C
- 47. G
- 48. B
- 49. D
- 50. A
- 51. B
- 52. G
- 53. D
- 54. E
- 55. F

SHORT ANSWER

- 56. E
- 57. B
- 58. E
- 59. C
- 60. AC
- 61. AD
- 62. E
- 63. D
- 64. AD
- 65. C

B 17.

 C 18.

 C 1.

 A 19.

 A 2.

 B 3.

 B 20.

 C 4.

 B 21.

 B 5.

 C 22.

 A 6.

 C 23.

 B 7.

 D 24.

 A 32.

 C 33.

 E 34.

 B 35.

 D 36.

 C 37.

 A 38.

 D 39.

 E 40.

 B 41.

 A 8.

 B 25.

 A 9.

 C 26.

 C 10.

 B 11.

 C 27.

 B 12.

 D 28.

 A 13.

 B 29.

 A 14.

 D 30.

 B 15.

 A 31.

 D 16.

 E 42.

 F 43.

 A 44.

 D 45.

 C 46.

 G 47.

 B 48.

 D 49.

 A 50.

 B 51.

G 52.

 D 53.

 E 54.

 F 55.

Animal Test 2

Multiple Choice

Identify the letter of the choice that best completes the statement or answers the question.

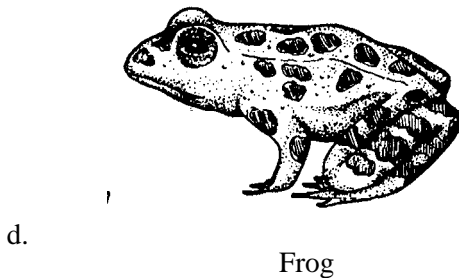
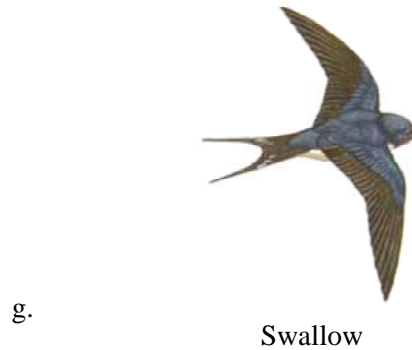
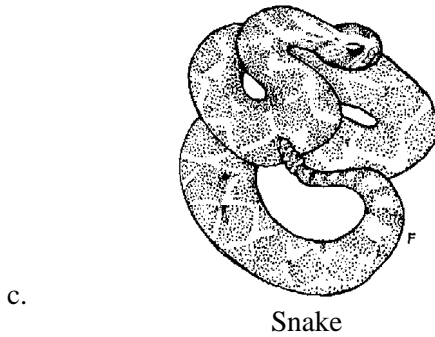
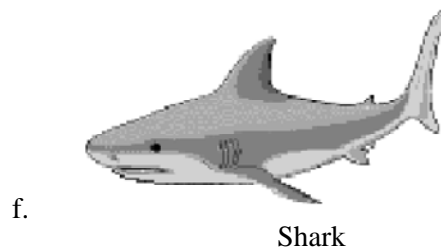
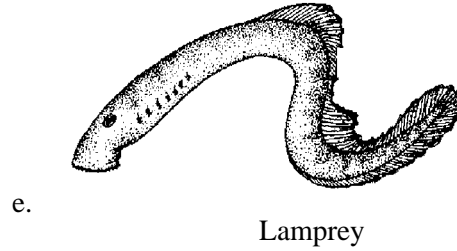
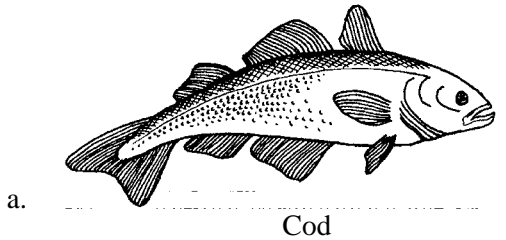
- _____ 1. The first vertebrates to evolve were
a. fishes. b. amphibians. c. lancelets. d. tunicates.
- _____ 2. An example of an animal with a marsupium is a(n)
a. wombat. b. elephant. c. sea lion. d. mouse.
- _____ 3. An endotherm is an animal that
a. stores large amounts of food in its stomach. b. has a low rate of metabolism. c. can see color very well.
d. can generate its own body heat.
- _____ 4. The compound eyes of insects
a. are made of many lenses. b. are located on the thorax. c. are not very good at detecting movement.
d. produce an image that is more detailed than what humans see.
- _____ 5. The easiest way to distinguish a bird's egg from a reptile's egg is to
a. count the number of membranes in the egg. b. find out if the egg is waterproof. c. test the hardness of the
outer shell. d. determine whether the egg contains an amnion.
- _____ 6. Mammals are characterized by each of the following EXCEPT
a. three-chambered hearts. b. mammary glands. c. hair. d. endothermy.
- _____ 7. In chordates, the long supporting rod that runs through the body is called the
a. tail. b. notochord. c. nerve cord. d. pharyngeal pouch.
- _____ 8. Most amphibians exist as
a. aquatic larvae that breathe with gills and as terrestrial adults that breathe using lungs and skin.
b. terrestrial larvae that breathe with gills and as aquatic adults that breathe using lungs and skin.
c. terrestrial larvae that breathe with gills and lungs and as aquatic adults that breathe using skin. d. aquatic
larvae that breathe using lungs and skin and as terrestrial adults that breathe with gills.
- _____ 9. The function of a placenta is to
a. exchange materials between an embryo and its mother. b. store urine until it is eliminated from the body.
c. store and process newly swallowed plant food. d. increase the volume of the chest cavity during breathing.
- _____ 10. Blood flows through the body of a fish in a
a. double-loop, open circulatory system. b. single-loop, closed circulatory system. c. double-loop, closed
circulatory system. d. single-loop, open circulatory system.
- _____ 11. The difference between reptilian eggs and amphibian eggs is that reptilian eggs
a. must develop in water. b. are surrounded by a protective shell and membranes. c. always hatch inside the
mother's body. d. do not contain an embryo.
- _____ 12. The easiest way to tell whether an arthropod is an insect or a spider is to
a. count its swimmerets. b. count its legs. c. observe its color. d. measure the length of its body.
- _____ 13. Insects are classified as
a. uniramians. b. chelicerates. c. crustaceans. d. arachnids.

- ___ 14. The skeleton of an echinoderm is an
a. exoskeleton made of chitin. b. exoskeleton made of calcium carbonate. c. endoskeleton made of chitin.
d. endoskeleton made of calcium carbonate.
- ___ 15. In most fishes, the structures that are most important for obtaining oxygen from water are the
a. vertebrae. b. gills. c. scales. d. lungs.
- ___ 16. One way an ectotherm can warm its body is to
a. bask in the sun. b. move into the shade. c. speed up its metabolism. d. crawl into an underground burrow.
- ___ 17. The two groups of nonvertebrate chordates are
a. tunicates and lancelets. b. skates and rays. c. lungfishes and coelacanths. d. frogs and toads.
- ___ 18. Which of the following is NOT a reason for the evolutionary success of insects?
a. Insects use a multitude of sense organs to respond to stimuli. b. Insects as a group are not very diverse because there are relatively few species. c. Many insects have a life cycle in which the young are very different from adults. d. The ability to fly has allowed insects to colonize new habitats.
- ___ 19. Why must arthropods molt?
a. to eat b. to reproduce c. to grow d. to breathe
- ___ 20. The only places on Earth where most reptiles cannot live are very
a. dry areas. b. wet areas. c. hot areas. d. cold areas.
- ___ 21. The egg-laying mammals are called
a. marsupials. b. monotremes. c. placental mammals. d. insectivores.
- ___ 22. Which of the following invertebrates is NOT a crustacean?
a. horseshoe crab b. fiddler crab c. barnacle d. crayfish
- ___ 23. How many pairs of legs are there on most body segments of a centipede?
a. six b. two c. five d. one
- ___ 24. In most species of echinoderms, respiration occurs mainly in the
a. tube feet. b. radial canals. c. ring canal. d. madreporite.
- ___ 25. If a bird has a hooked bill and sharp talons, it might be a(an)
a. ostrich. b. bird of prey. c. perching bird. d. heron.
- ___ 26. Arthropods are classified based on the number and structure of their
a. gills and hearts. b. body segments and appendages. c. muscles and bones. d. eyes and wings.
- ___ 27. Modern jawless fishes include
a. lampreys. b. lungfishes. c. sharks. d. skates.
- ___ 28. Which of the following is NOT a characteristic of all birds?
a. They have an outer covering of feathers. b. They maintain a constant internal body temperature. c. They can fly. d. They have two legs.
- ___ 29. Reptiles exchange gases through their
a. skin. b. lungs. c. limbs. d. gills.
- ___ 30. A vertebrate is any chordate that has a
a. hollow nerve cord. b. tail that extends beyond the anus. c. backbone. d. notochord.

- ___ 31. The echinoderms that look like warty, moving pickles are
a. sea cucumbers. b. sea stars. c. sea urchins. d. feather stars.

Matching

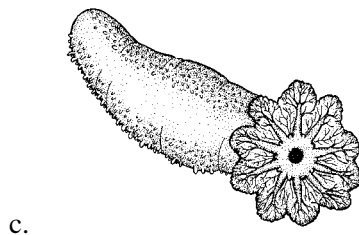
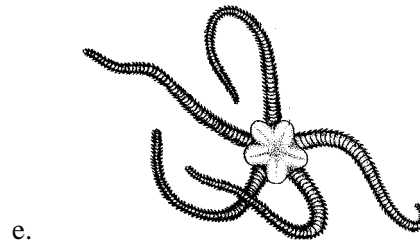
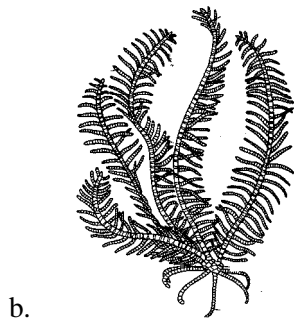
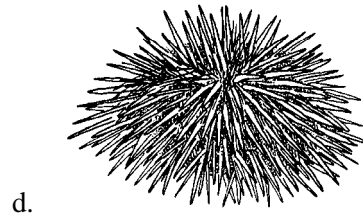
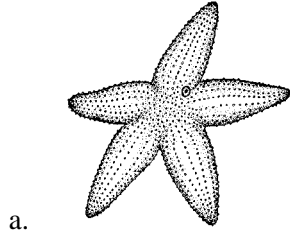
Match the letter of the diagram below with the appropriate phrase.



- ___ 32. Member of Chondrichtes
___ 33. Member of class Reptilia
___ 34. Produces milk
___ 35. Lacks bone and jaws
___ 36. Member of class Mammalia
___ 37. Possesses a swim bladder

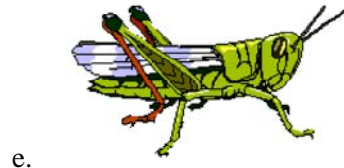
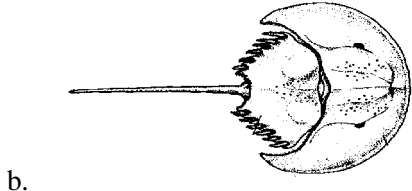
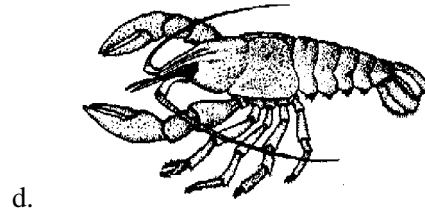
- ___ 38. Member of class Aves
- ___ 39. Member of class Amphibia
- ___ 40. Member of class Agnatha
- ___ 41. Has Jaws but lacks bony skeleton
- ___ 42. Member of Osteichthes
- ___ 43. Often uses skin as a respiratory organ
- ___ 44. Possesses a developed sternal keel
- ___ 45. Undergoes Metamorphosis

Match the name of the class of echinoderm with the letter of the appropriate illustration below.



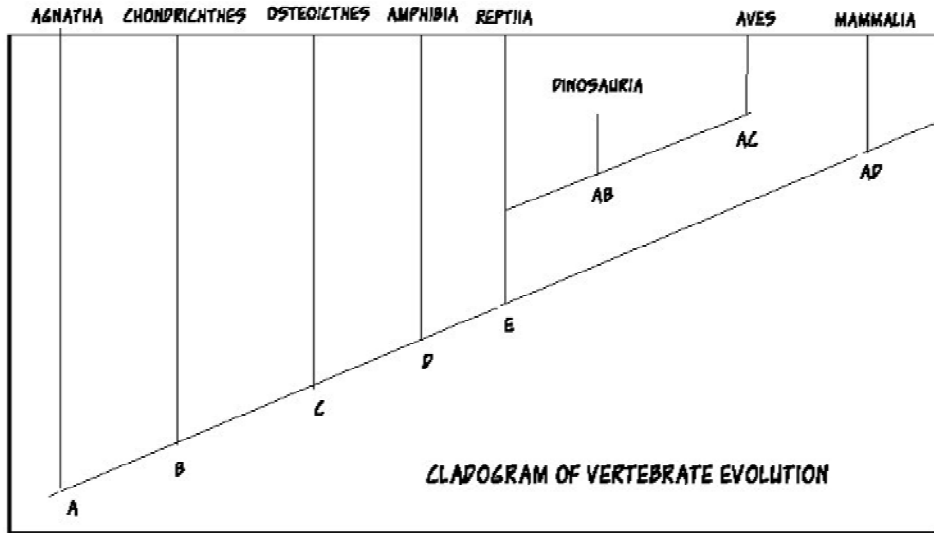
- ___ 46. Crinoidea
- ___ 47. Asteroidea
- ___ 48. Holothuroidea
- ___ 49. Echinoidea
- ___ 50. Ophiuroidea

Match The name of the class of arthropods with the letter of the appropriate diagram below.



- ___ 51. Arachnida
- ___ 52. Insecta
- ___ 53. Crustacea
- ___ 54. Merostomata
- ___ 55. Diplopoda

Match the letter from the cladogram of chordate evolution below with the correct evolutionary adaptation.



- 56. Marsupium _____
- 57. Internal fertilization _____
- 58. First amniotic egg _____
- 59. Extant class possessing feathers _____
- 60. Placenta _____
- 61. Paired fins _____
- 62. Keratinized skin (not including toads) _____
- 63. Functional lungs (not including lungfish) _____
- 64. First bony skeleton _____
- 65. Swim Bladder _____

Animal Test 2 Answer Section

MULTIPLE CHOICE

1. A
2. A
3. D
4. A
5. C
6. A
7. B
8. A
9. A
10. B
11. B
12. B
13. A
14. D
15. B
16. A
17. A
18. B
19. C
20. D
21. B
22. A
23. D
24. A
25. B
26. B
27. A
28. C
29. B
30. C
31. A

MATCHING

32. F
33. C
34. B
35. E
36. B
37. A

- 38. G
- 39. D
- 40. E
- 41. F
- 42. A
- 43. D
- 44. G
- 45. D

- 46. B
- 47. A
- 48. C
- 49. D
- 50. E

- 51. A
- 52. E
- 53. D
- 54. B
- 55. C

SHORT ANSWER

- 56. AD
- 57. E
- 58. E
- 59. AC
- 60. AD
- 61. B
- 62. E
- 63. D
- 64. C
- 65. C

- D 14. A 31. G 38.
 D 39.
 E 40.
 F 41.
 A 42.
 D 43.
 G 44.
 D 45.
- A 1. B 15.
 A 2. A 16.
 D 3. A 17.
 A 4. B 18.
 C 5. C 19.
 D 20.
 A 6. B 21.
 B 7. A 22.
 A 8. D 23.
 A 9. A 24.
 B 10. B 25.
 B 11. B 26.
 C 12. A 27.
 A 13. C 28.
 B 29.
 C 30.
- F 32.
 C 33.
 B 34.
 E 35.
 B 36.
 A 37.
- A 51.
 E 52.
 D 53.
 B 54.
 C 55.
- B 46.
 A 47.
 C 48.
 D 49.
 E 50.