

Cell Energy Coloring Sheets

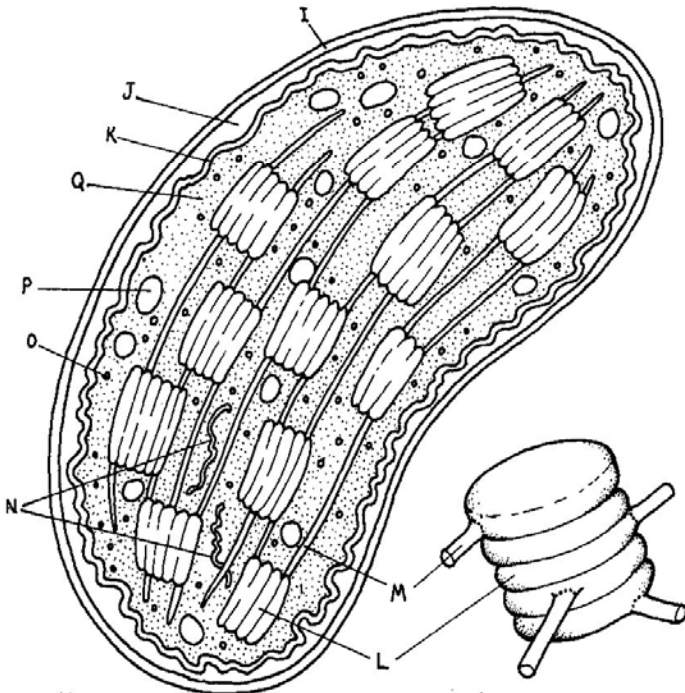
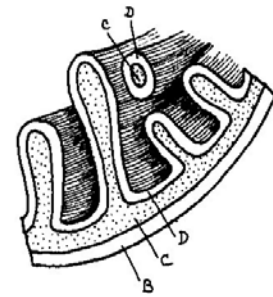
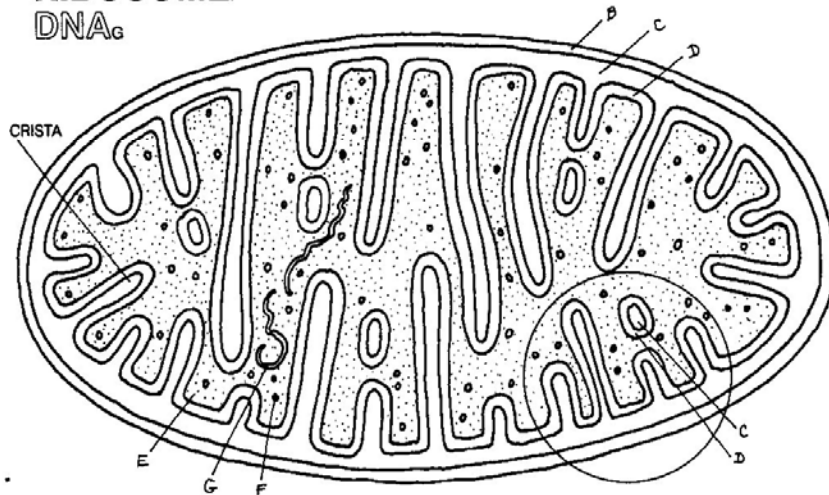
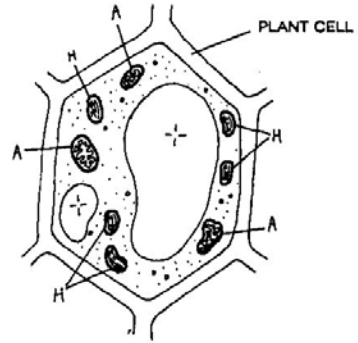
NAME: _____

PER. _____

DATE: _____

MITOCHONDRION AND CHLOROPLAST.

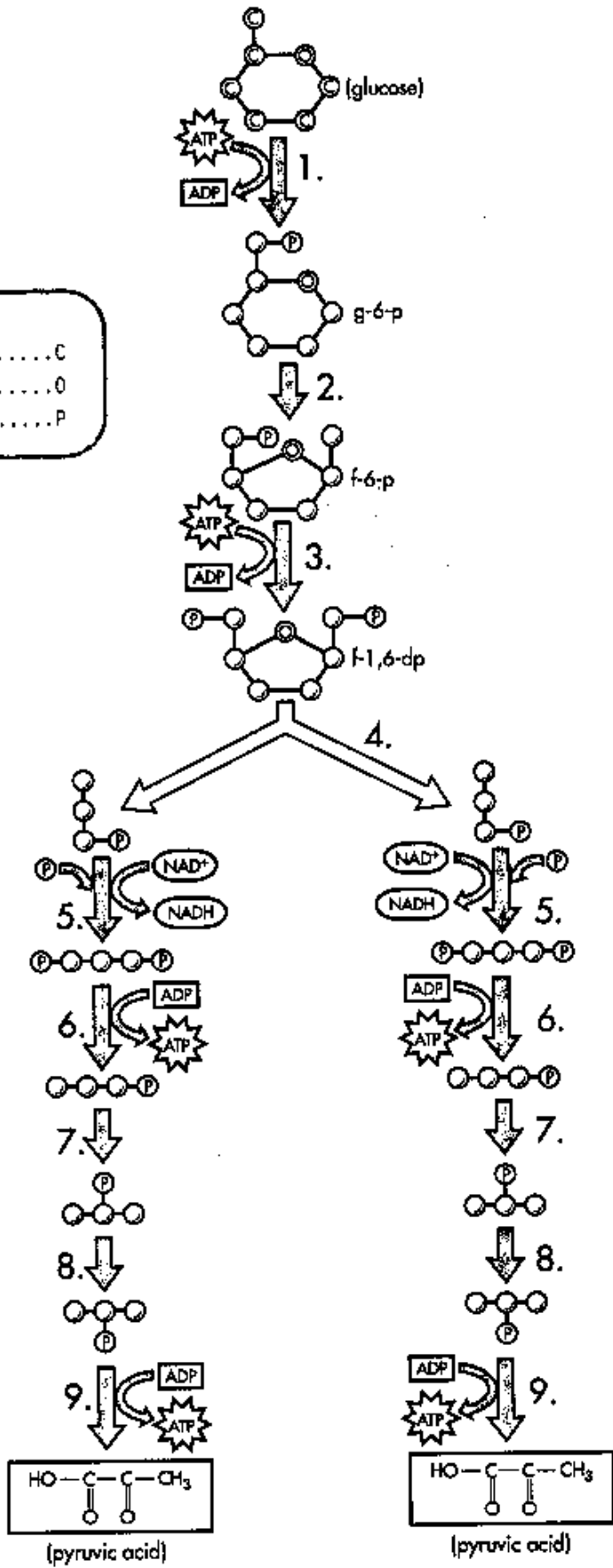
MITOCHONDRION,
OUTER MEMBRANE,
INTERMEMBRANE SPACE,
INNER MEMBRANE,
MATRIX,
RIBOSOME,
DNA.

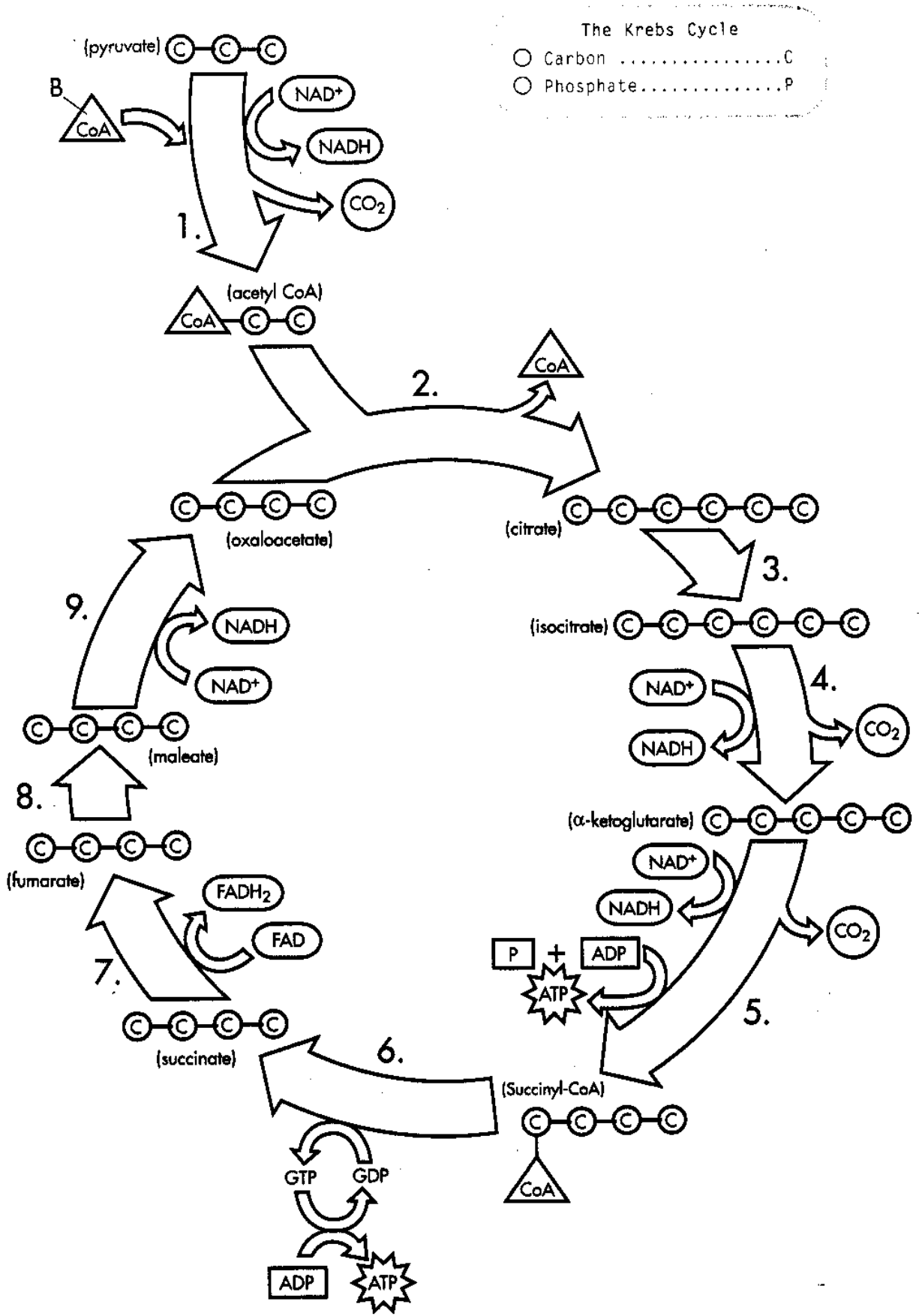


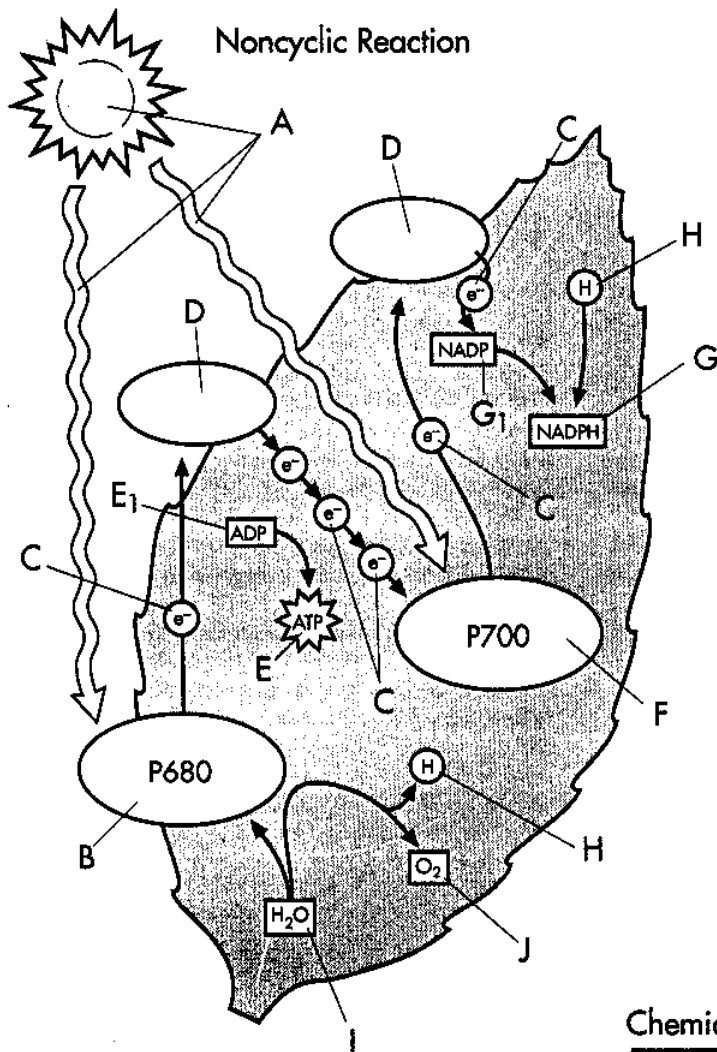
CHLOROPLAST,
OUTER MEMBRANE,
INTERMEMBRANE SPACE,
INNER MEMBRANE,
GRANUM,
THYLAKOID,
STROMAL LAMELLA,
DNA,
RIBOSOME,
STARCH GRAIN,
STROMA.

Glycolysis

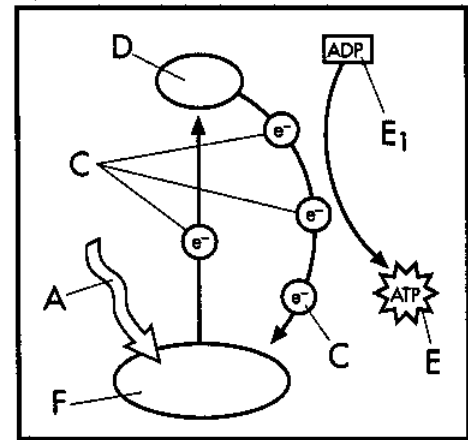
- CarbonC
- OxygenO
- Phosphate Group.....P



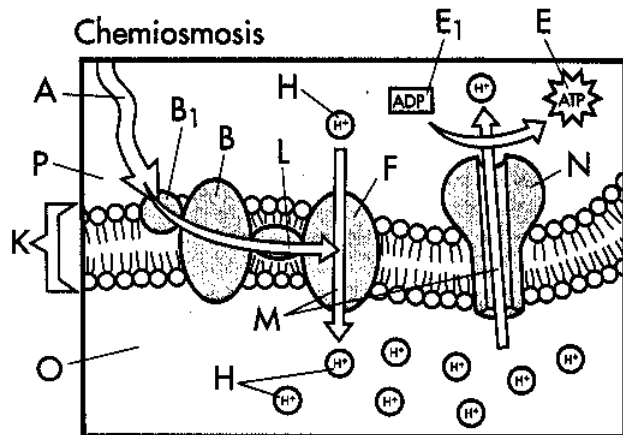




Cyclic Reaction



Chemiosmosis

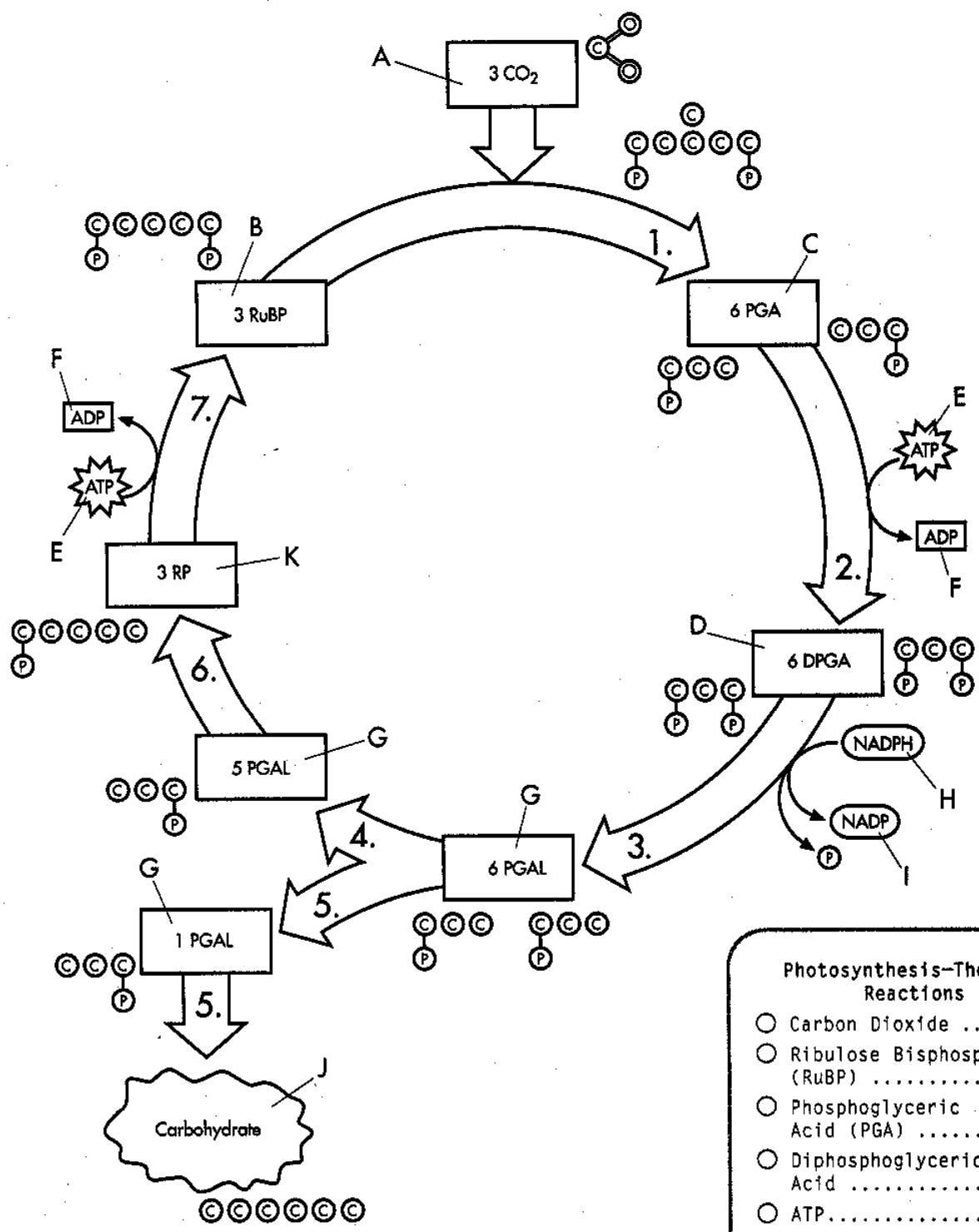


Photosynthesis—The Light Reactions

- Light Energy A
- Photosystem II B
- Chlorophyll B₁
- Electron C
- Electron Acceptor D
- ATP E
- ADP E₁
- Photosystem I F
- NADPH G
- NADP₁ G
- Hydrogen Ion H
- Water Molecule I
- Diatomic Oxygen J

- Thylakoid Membrane K
- Energy Flow L
- Hydrogen Ion Flow M
- ATP Synthetase N
- Thylakoid Space O
- Stroma P

photosynthesis--The Dark Reactions



- Photosynthesis--The Dark Reactions**
- Carbon DioxideA
 - Ribulose Bisphosphate (RuBP)B
 - Phosphoglyceric Acid (PGA)C
 - Diphosphoglyceric AcidD
 - ATP.....E
 - ADP.....F
 - Phosphoglyceraldehyde ..G
 - NADPH.....H
 - NADPI
 - CarbohydrateJ
 - Ribulose PhosphateK