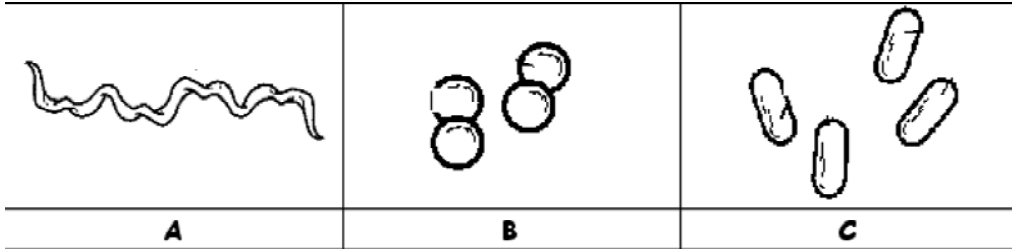


DO NOT WRITE ON QUIZ

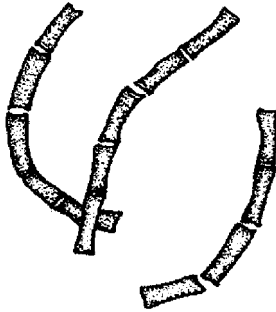
L2 Biology: Bacteria quiz

Multiple Choice

Identify the letter of the choice that best completes the statement or answers the question.



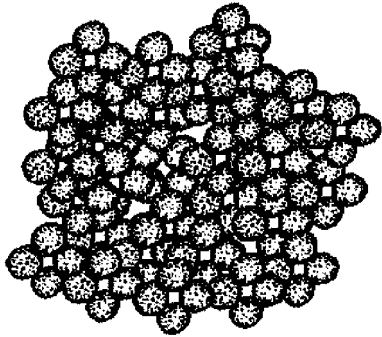
- _____ 1. Item A in the above diagram refers to a(an)
a. Cocci b. Spirillum c. Bacilli d. Virus
- _____ 2. Item B refers to a(an)
a. Cocci b. Bacillum c. Spirillum d. virus
- _____ 3. Item C refers to a(an)
a. Cocci b. Bacillum c. Spirillum d. Virus



- _____ 4. The bacteria above would best be described as a(an)
a. monobacillus b. streptococcus c. staphylococcus d. streptobacillus e. monobacillus

DO NOT WRITE ON QUIZ

ID: A



- ___ 5. The bacteria above would best be describes ad a(an)
a. streptobacillis b. monococcus c. monospirillum d. staphlospirillum e. staphlococcus
- ___ 6. Bacteria reproduce through
a. Mitosis b. Binary fission c. Meiosis d. Budding
- ___ 7. Bacteria which obtain nutritional needs through consuming existing organic molecules are known as.
a. Phototrophs b. Autotrophs c. Heterotrophs d. Producers
- ___ 8. If a bacteria stains red/pink in a gram stain it is said to be
a. Gram positive b. Gram negative c. None of the above
- ___ 9. Type of bacteria which can tolerate harsh environments are known usually as.
a. Archaeobacteria b. Eubacteria c. Cyanobacteria d. Prochlorobacteria e. None of the above
- ___ 10. Known as "Modern" bacteria
a. Prochlorobacteria b. Cyanobacteria c. Eubacteria d. Archaeobacteria e. None of the above
- ___ 11. Causes Ebola
a. Prochlorobacteria b. Eubacteria c. Cyanobacteria d. Streptococci e. None of the above
- ___ 12. Which of the following statements regarding bacterial DNA is true
a. Bacteria only possess 4 chromosomes b. It is a single circular loop c. It contains histone proteins d. It is only single stranded
- ___ 13. Bacterial endospore formation usually occurs...
a. Immediately before cell division b. Before feeding c. During conjugation d. Under times of severe stress
- ___ 14. Which of the following taxonomic domains contains kingdom animalia
a. Bacteria b. Archaea c. Eukarya d. Fungi

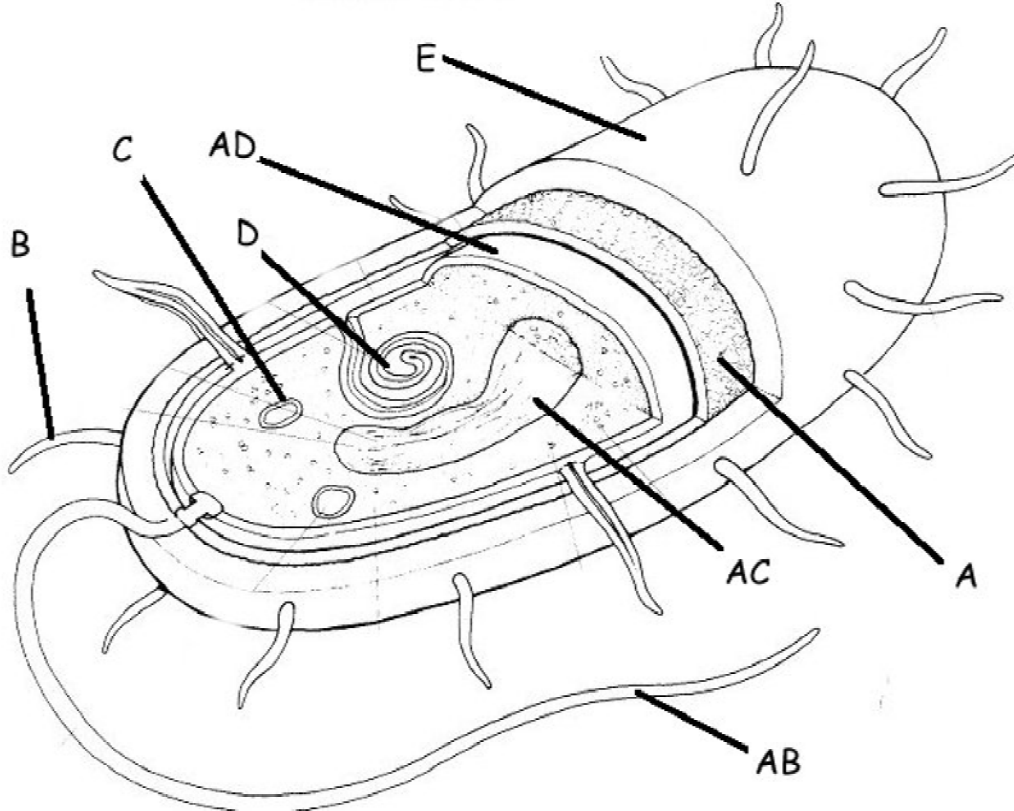
DO NOT WRITE ON QUIZ

ID: A

Completion

Complete each sentence or statement.

For the following questions refer to the following diagram of a prokaryotic cell below:



15. Stains pink in a gram stain _____
16. Stains Blue in a gram stain _____
17. Is used to move bacteria _____
18. Makes bacteria more likely to be pathogenic (cause disease) _____
19. Exchanged when bacteria undergo sexual reproduction _____
20. Pili _____
21. Cell Capsule _____
22. Cell Membrane _____
23. Cell Wall _____
24. Nucleoid (region) _____
25. Flagellum _____

L2 Biology: Bacteria quiz

Answer Section

MULTIPLE CHOICE

1. B
2. A
3. B
4. D
5. E
6. B
7. C
8. B
9. A
10. C
11. E
12. B
13. D
14. A

COMPLETION

15. E
16. A
17. AB
18. E
19. C
20. B
21. E
22. AD
23. A
24. AC
25. AB

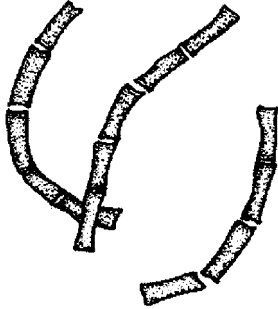
- B 1.
- A 2.
- B 3.
- D 4.
- E 5.
- B 6.
- C 7.
- B 8.
- A 9.
- C 10.
- E 11.
- B 12.
- D 13.
- A 14.

DO NOT WRITE ON QUIZ

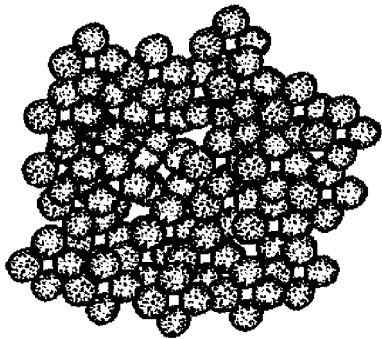
L2 Biology: Bacteria quiz

Multiple Choice

Identify the letter of the choice that best completes the statement or answers the question.



- _____ 1. The bacteria above would best be described as a(an)
 a. staphlococcus b. streptobacillis c. monobacillus d. streptococcus e. monobacillus

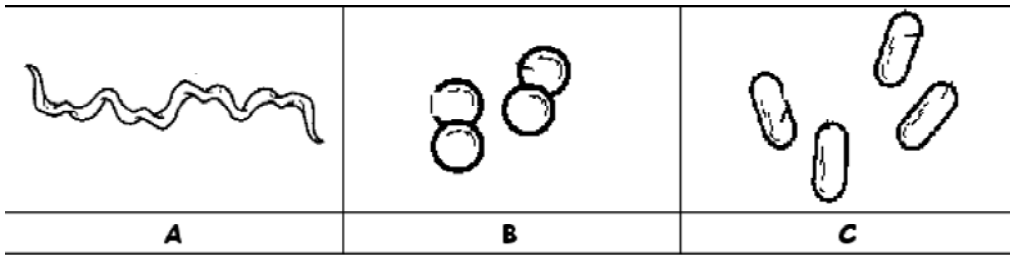


- _____ 2. The bacteria above would best be describes ad a(an)
 a. staphlospirillum b. monospirillum c. streptobacillis d. staphlococcus e. monococcus
- _____ 3. Causes Ebola
 a. None of the above b. Cyanobacteria c. Prochlorobacteria d. Streptococci e. Eubacteria
- _____ 4. Which of the following statements regarding bacterial DNA is true
 a. It is only single stranded b. It contains histone proteins c. It is a single circular loop d. Bacteria only possess 4 chromosomes
- _____ 5. If a bacteria stains red/pink in a gram stain it is said to be
 a. Gram negative b. None of the above c. Gram positive
- _____ 6. Bacteria reproduce through
 a. Mitosis b. Meiosis c. Binary fission d. Budding
- _____ 7. Type of bacteria which can tolerate harsh environments are known usualy as.
 a. Eubacteria b. Archaeobacteria c. Prochlorobacteria d. None of the above e. Cyanobacteria

DO NOT WRITE ON QUIZ

ID: B

- ___ 8. Known as "Modern" bacteria
a. Archaeobacteria b. Cyanobacteria c. None of the above d. Eubacteria e. Prochlorobacteria

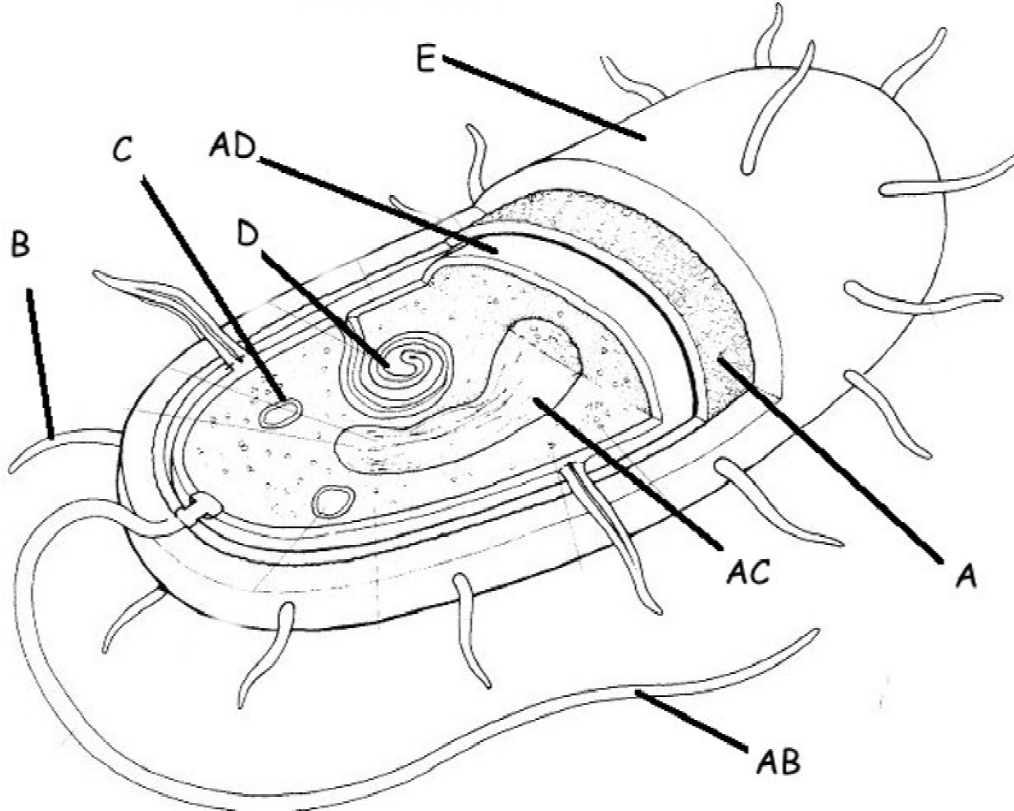


- ___ 9. Item A in the above diagram refers to a(an)
a. Bacilli b. Cocci c. Virus d. Spirillum
- ___ 10. Item B refers to a(an)
a. virus b. Cocci c. Spirillum d. Bacillum
- ___ 11. Item C refers to a(an)
a. Spirillum b. Virus c. Bacillum d. Cocci
- ___ 12. Bacteria which obtain nutritional needs through consuming existing organic molecules are known as.
a. Phototrophs b. Producers c. Autotrophs d. Heterotrophs
- ___ 13. Bacterial endospore formation usually occurs...
a. Before feeding b. During conjugation c. Under times of severe stress d. Immediately before cell division
- ___ 14. Which of the following taxonomic domains contains kingdom animalia
a. Fungi b. Archaea c. Eukarya d. Bacteria

Completion

Complete each sentence or statement.

For the following questions refer to the following diagram of a prokaryotic cell below:



15. Cell Capsule _____
16. Flagellum _____
17. Cell Wall _____
18. Makes bacteria more likely to be pathogenic (cause disease) _____
19. Nucleoid (region) _____
20. Stains Blue in a gram stain _____
21. Cell Membrane _____
22. Pilli _____
23. Exchanged when bacteria undergo sexual reproduction _____
24. Is used to move bacteria _____
25. Stains pink in a gram stain _____

L2 Biology: Bacteria quiz

Answer Section

MULTIPLE CHOICE

1. B
2. D
3. A
4. C
5. A
6. C
7. B
8. D
9. D
10. B
11. C
12. D
13. C
14. D

COMPLETION

15. E
16. AB
17. A
18. E
19. AC
20. A
21. AD
22. B
23. C
24. AB
25. E

D 8.

 D 9.

 B 10.

 B 1.

 C 11.

 D 12.

 C 13.

 D 14.

 D 2.

 A 3.

 C 4.

 A 5.

 C 6.

 B 7.